

TASK 2- STRATIGRAPHY

START UP WORK

- Performed literature search on Trenton-Black River interval.
- Collected stratigraphic columns from all states for creation of a generalized correlation chart.
- Compiled all seismic data relevant to project.
- Created preliminary database for all Ohio wells that TD in Utica or deeper.
- Generated map showing this data.

TASK 2 – STRATIGRAPHY

CORE TASKS COMPLETED

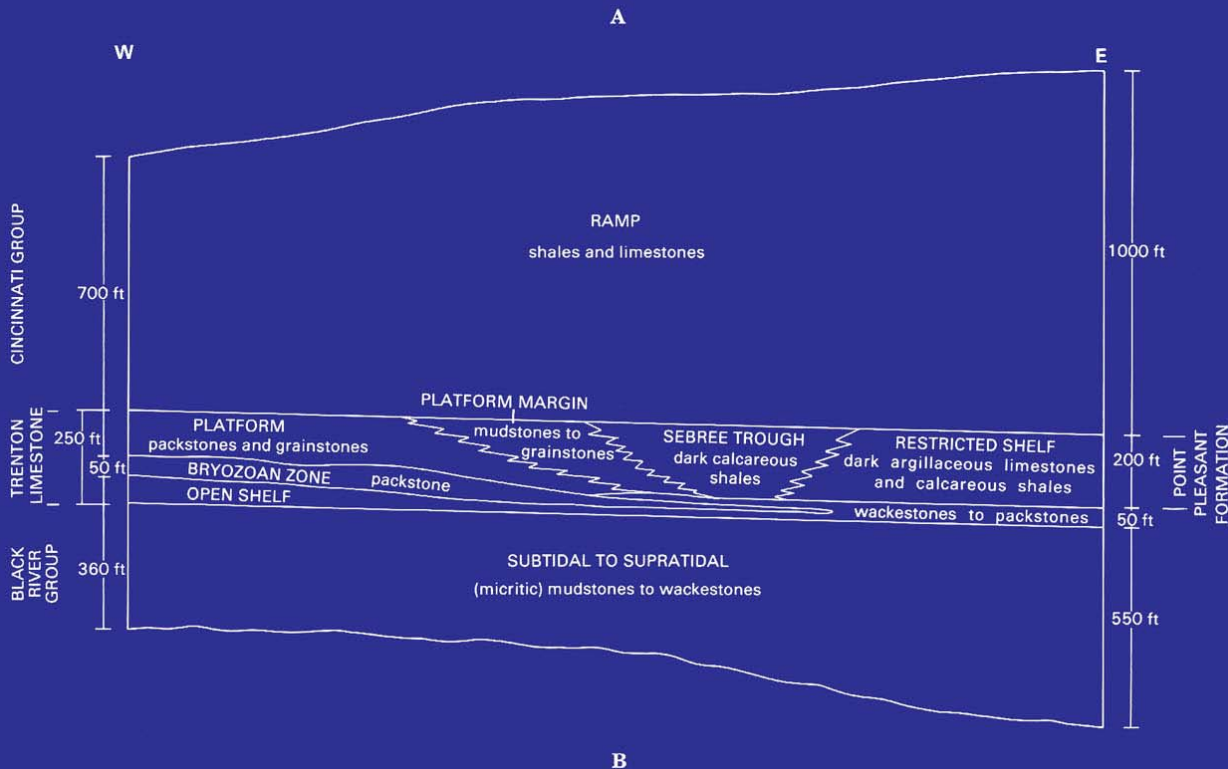
- Collected core databases from all Consortium states and Ontario and created database for all Trenton-Black River cores.
- Constructed a basinwide Trenton-Black River core map.
- Created database for all Ohio Trenton-Black River thin sections.
- Compiled and examined all existing Ohio Trenton-Black River core descriptions and records.
- Examined 5 cores, photographed and correlated to geophysical logs.
- Assisted in selecting sample intervals in cores for Task 3 (petrography) and Task 4 (C 13 isotope work).

TASK 2 - STRATIGRAPHY

CROSS SECTION TASKS COMPLETED

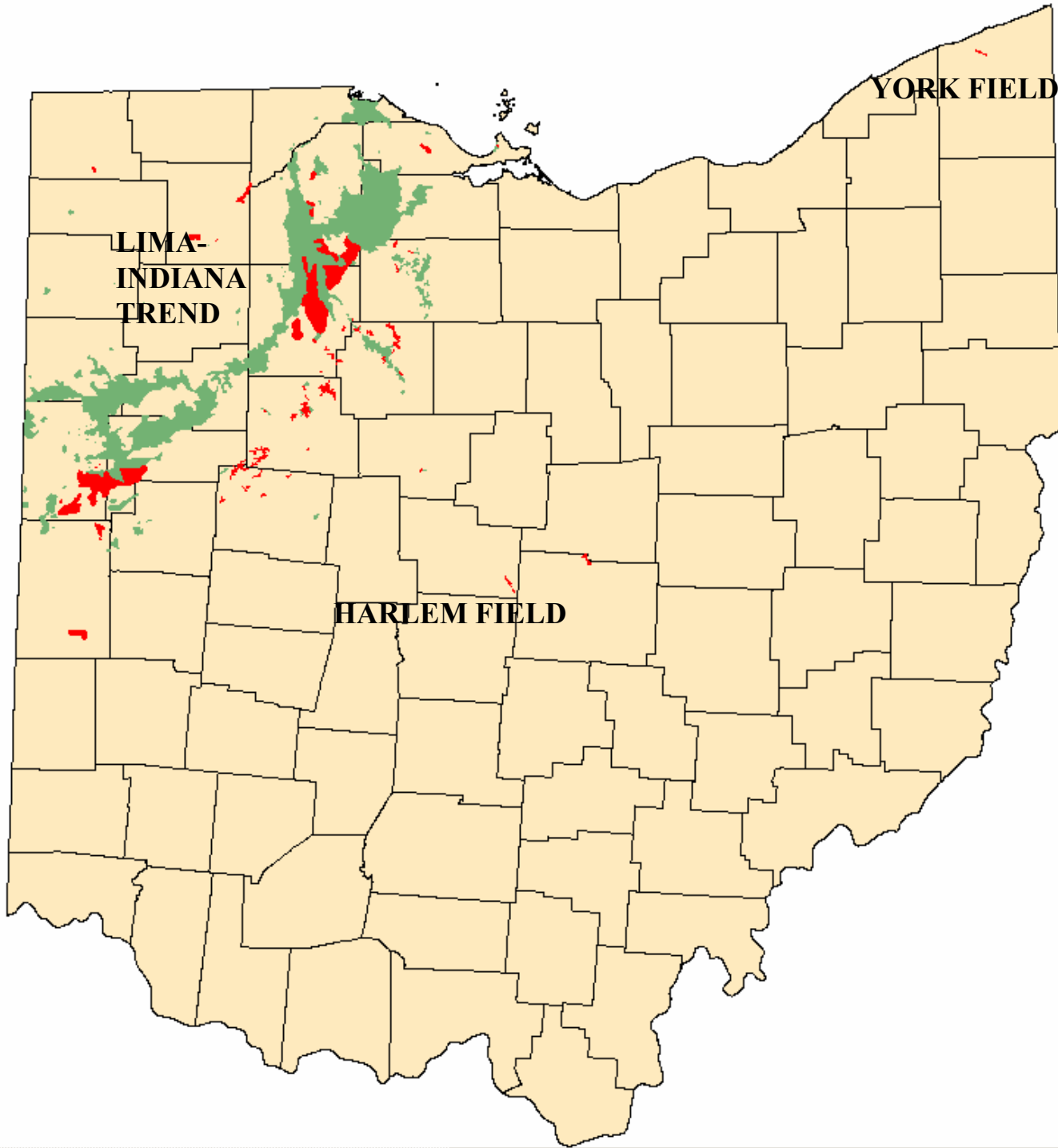
- ☐ • Compiled database of all Precambrian wells for use in regional cross sections.
- ☐ • Scanned significant geophysical logs into TIFF files for use in preliminary cross sections and significant cores.
- ☐ • Laid out 16 regional cross section lines across the basin using Precambrian wells.
- ☐ • Created 3 preliminary stratigraphic cross sections illustrating the stratigraphy from the Ordovician Utica to the Precambrian interval.

Facies distribution in the Trenton Limestone of NW Ohio and schematic diagram illustrating relationships between formations and formations (Wickstrom and others, 1992).

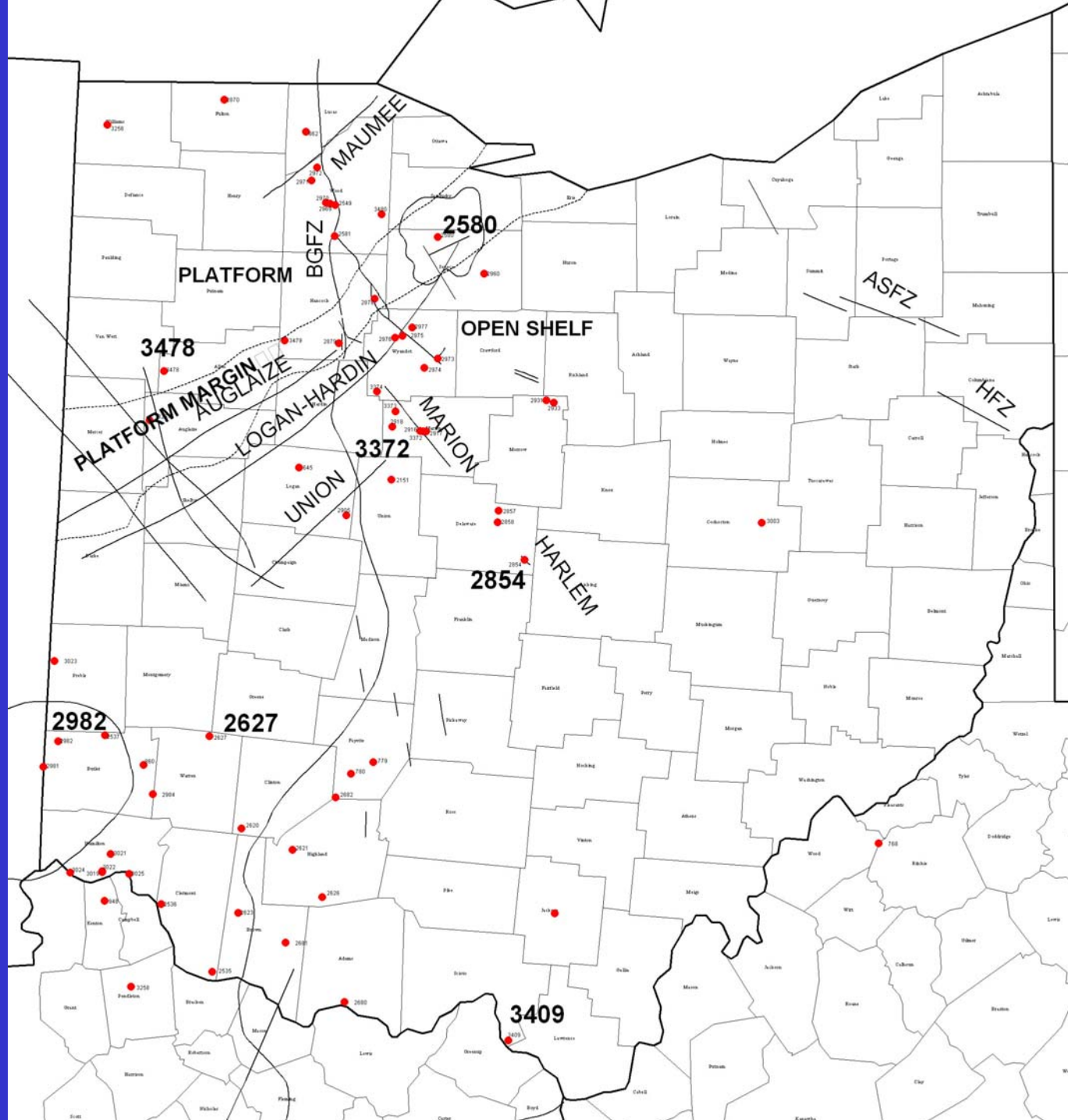


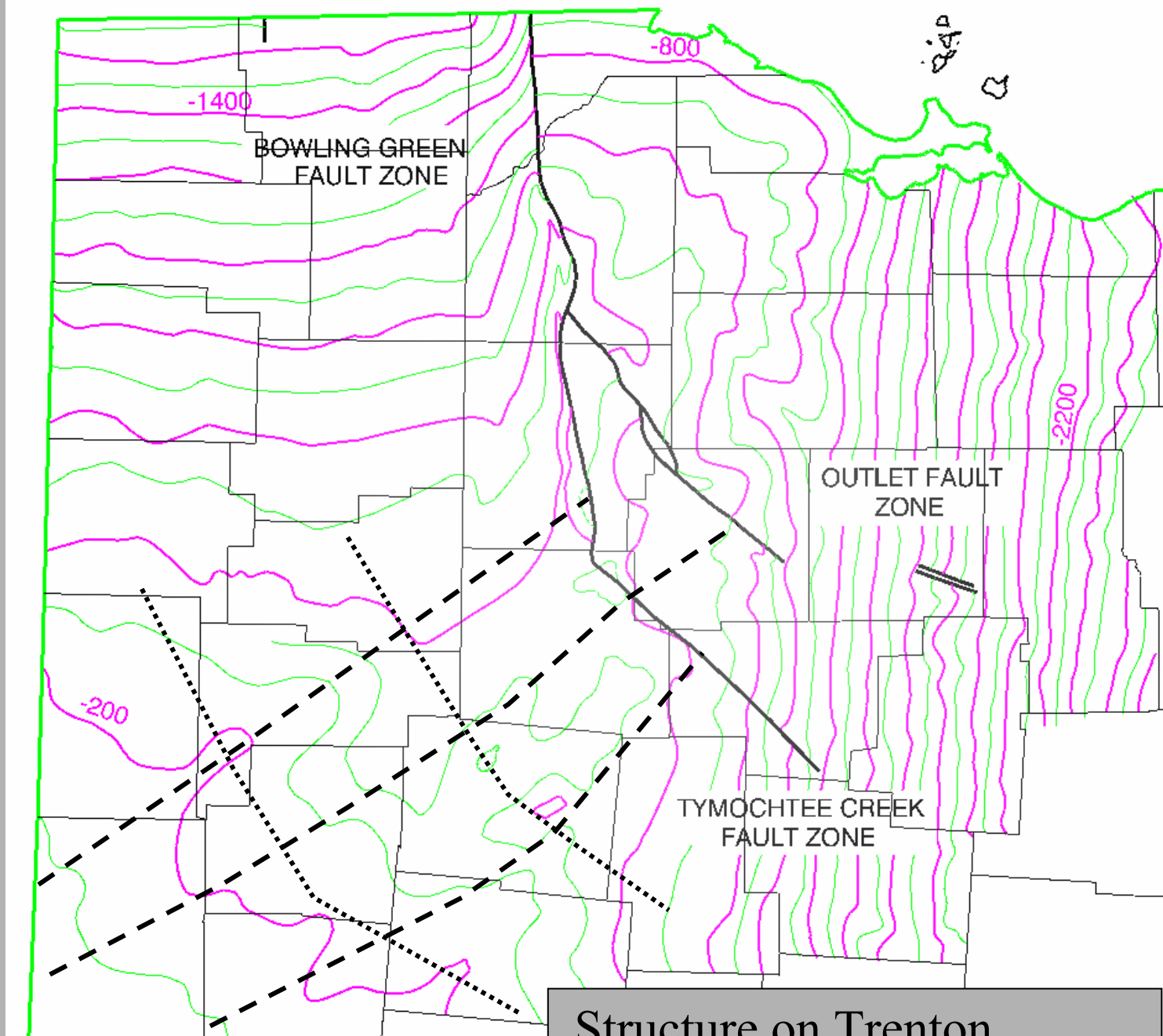
Reconstruction of
depositional and tectonic
elements during Late
Trenton/Point Pleasant time.





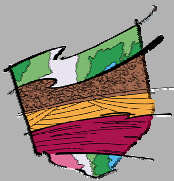
TRENTON-BLACK RIVER OIL AND GAS FIELDS MAP

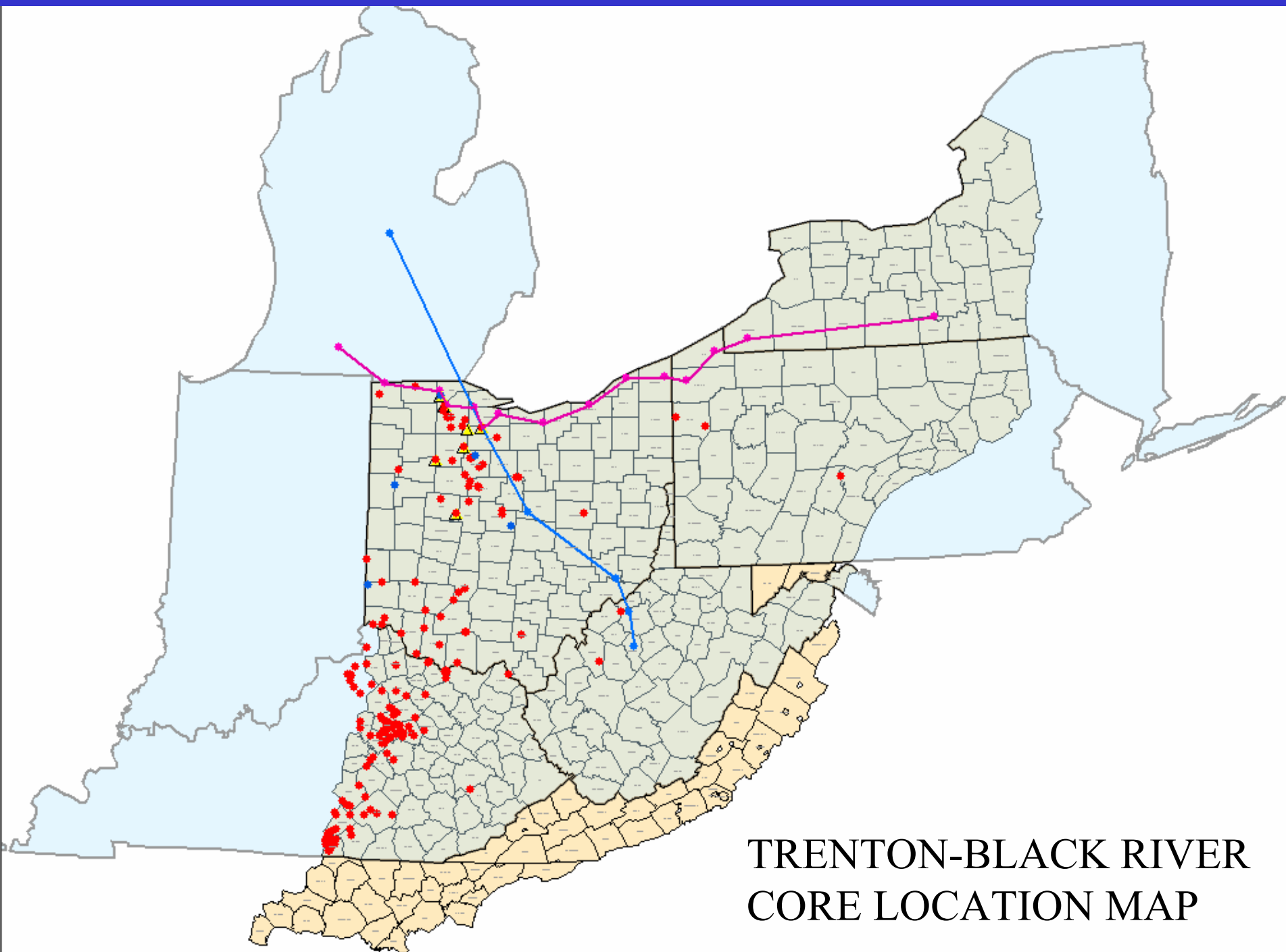


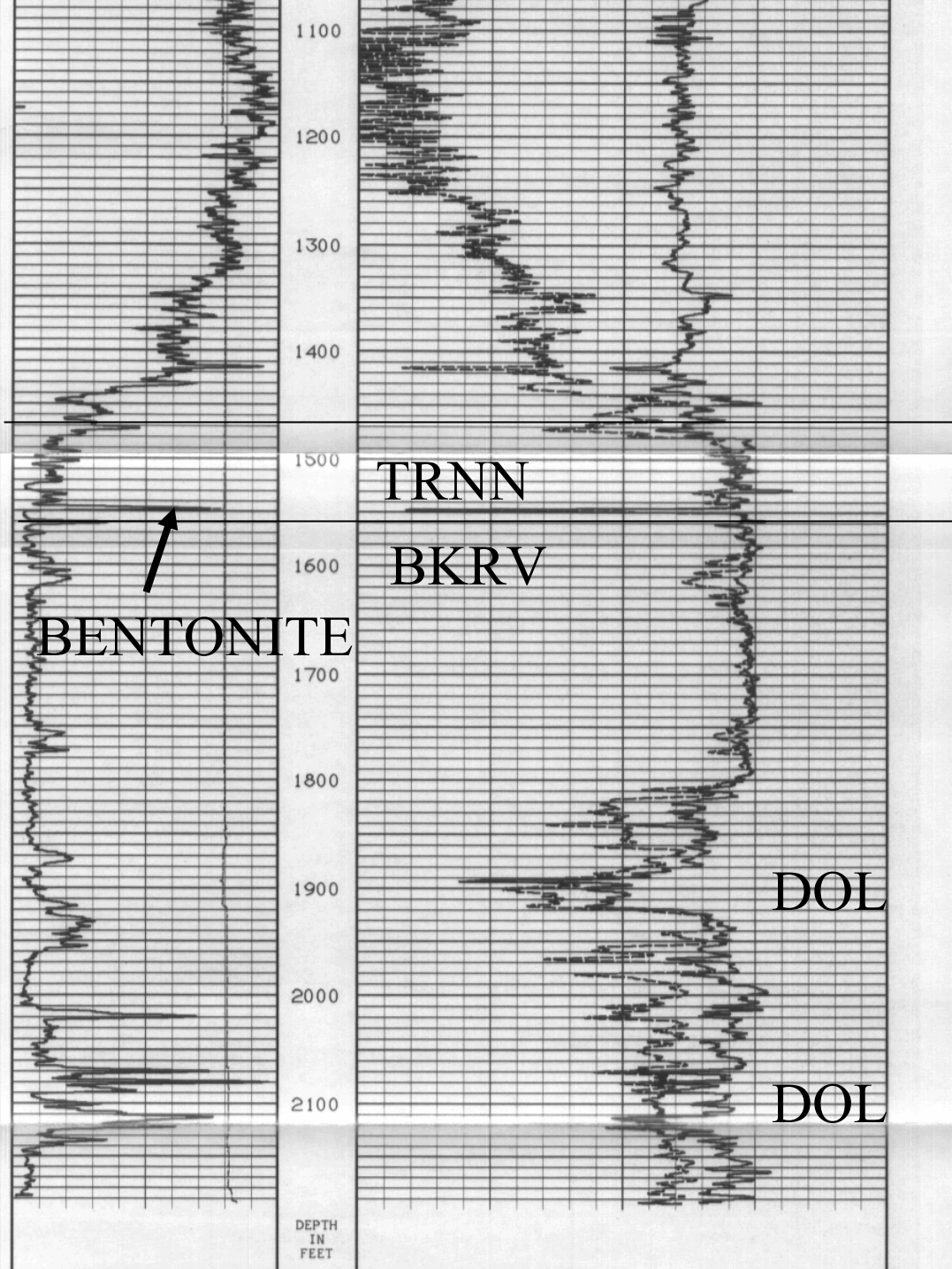


Structure on Trenton

Limestone







Marion Co., OH

Chevron

1A Prudential

Permno 196

Core 3372



CORE 3372, CHEVRON, 1A PRUDENTIAL, MARION CO., OH,
TRENTON CONTACT AT 1180'



CORE 3372, MARION CO., CHEVRON, 1A PRUDENTIAL
DEPTH 1551



CORE 3372, CHEVRON, 1A PRUDENTIAL, MARION CO., OH
TYPICAL BLACK RIVER, 1622'-1631'



CORE 3372, CHEVRON, 1A PRUDENTIAL, MARION CO., OH
BKRV HYDROTHERMAL DOLOMITIZED ZONE, DEPTH 1840-
1849'



CORE 3372, CHEVRON, 1A PRUDENTIAL, MARION CO., OH
BKRV LS, SECONDARY CALCITE MINERALIZATION, DEPTH 1892-1904'



CORE 3372, CHEVRON, 1A PRUDENTIAL, MARION CO., OH
LIMESTONE, FRACTURED RUBBLE ZONE, DEPTH 1914-1924'



CORE 3372, CHEVRON, 1A PRUDENTIAL, MARION CO., OH BLACK RIVER LIMESTONE, DEPTH 1924-1933'



CORE 3372, CHEVRON, 1A PRUDENTIAL, MARION CO., OH
KNOX UNCONFORMITY CONTACT AT 2027.8'

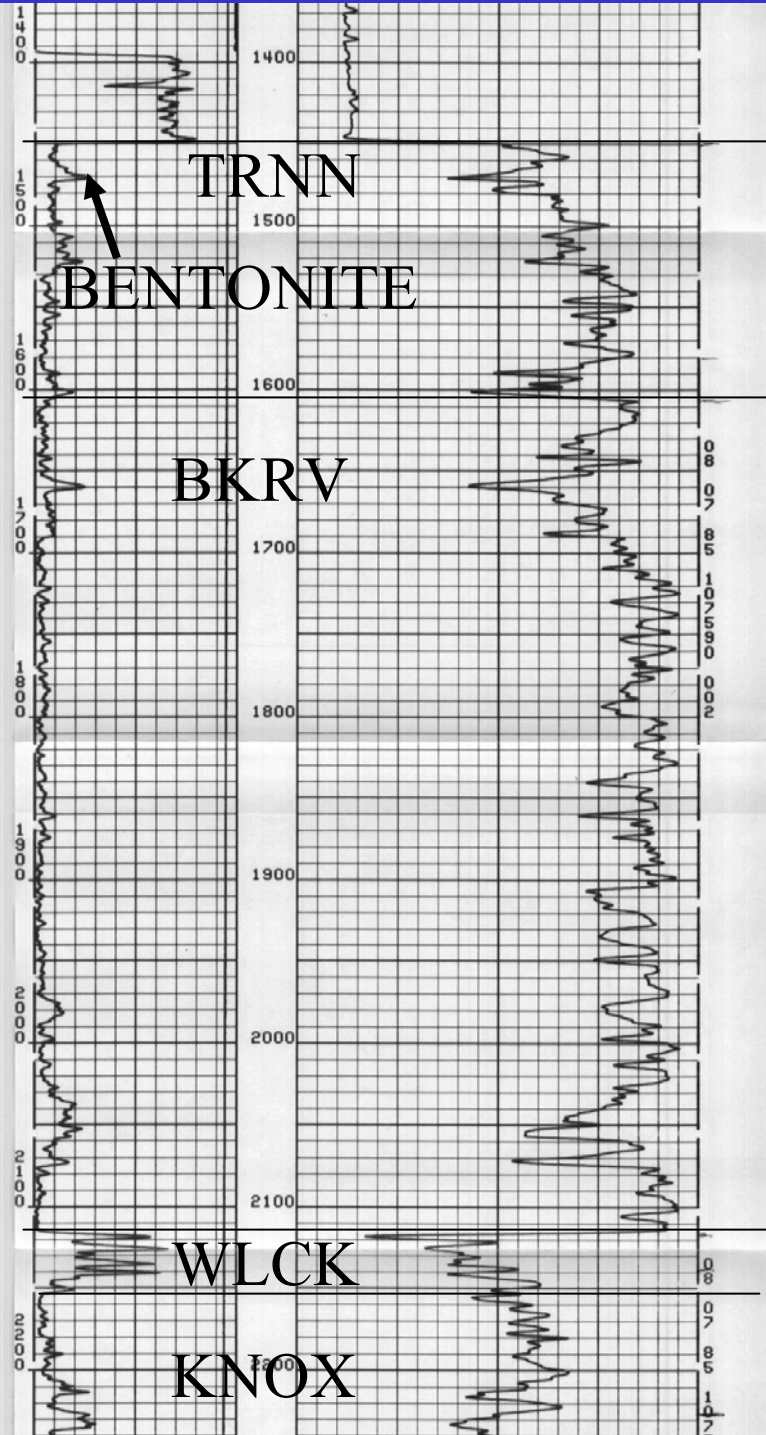
SENECA CO., OH

CORE 2580

ODGS

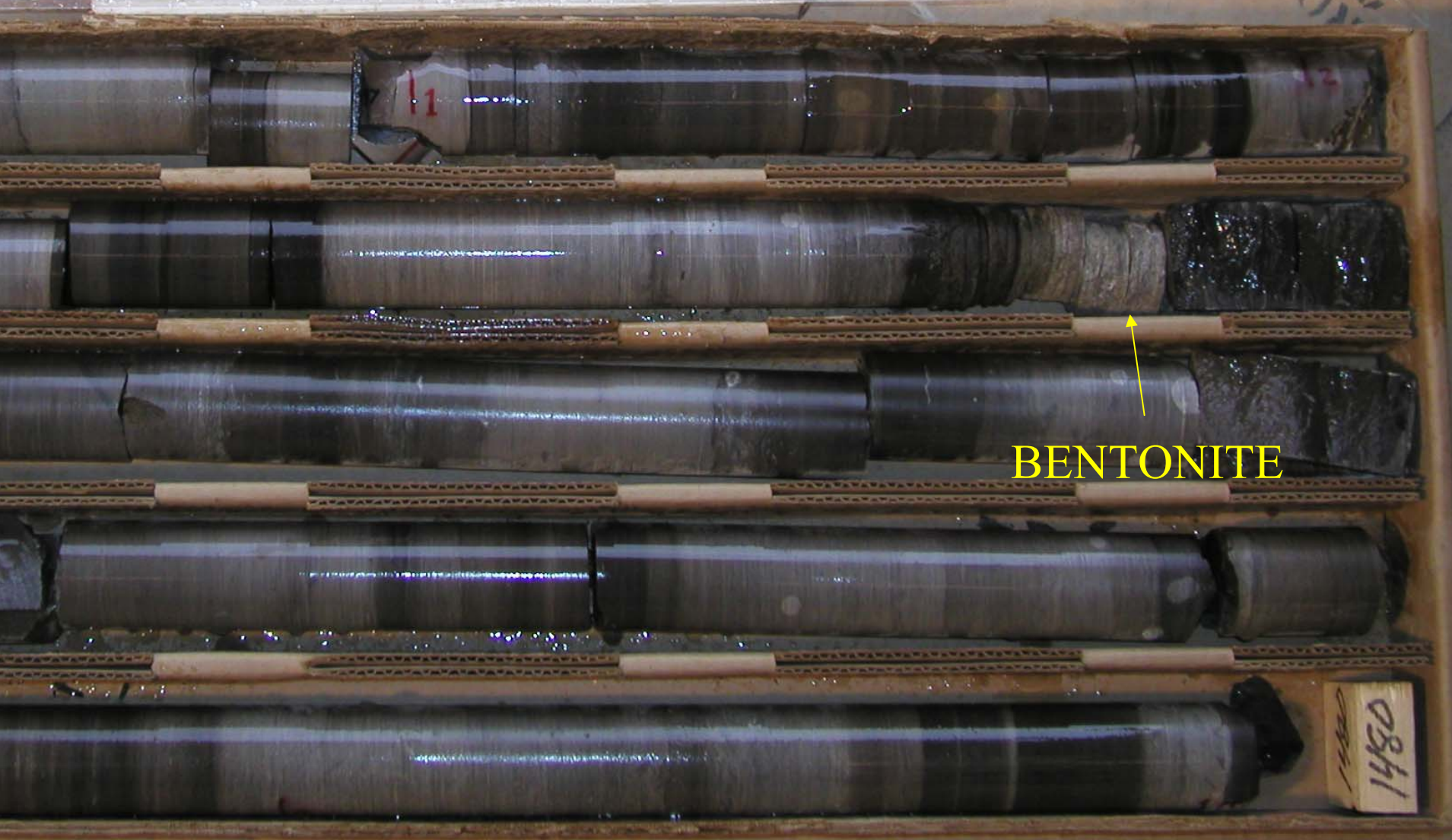
M&B ASPHALT

PERMNO 60840





SENECA CO., OH, CORE 2580, ODGS, M&B ASPHALT
PNPL/TRNN CONTACT AT 1450'



SENECA CO., OH, CORE 2580, ODGS, M&B ASPHALT
TRNN BENTONITE AT 1474'



SENECA CO., OH, CORE 2580, ODGS, M&B ASPHALT
GRADATIONAL TRNN/BKRV CONTACT, DEPTH 1607'



SENECA CO., OH, CORE 2580, ODGS, M&B ASPHALT
BKRV LS, DEPTH 1800-1810'



KNOX CONTACT

SENECA CO., OH, CORE 2580, ODGS, M&B ASPHALT
KNOX UNCONFORMITY AT 2143.5



CORE 3478, ALLEN CO. OH



CORE 3478, ALLEN CO. OH

NEEDS FROM OTHER TEAMS/STATES

- C 13 data in representative areas to assist in identifying Trenton and Black River contacts.
- Logs from Ontario for use in regional cross sections.
- Discussion among representatives from each state to resolve any state line boundary correlation problems.
- Input for any additional key wells to use in regional cross sections.