

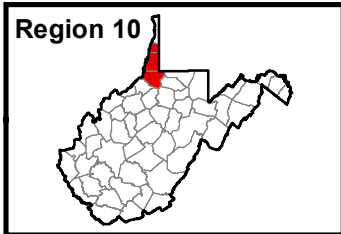


# West Virginia

## Broadband Mapping Program

### Region 10 - FCC Unserved Fixed Broadband

Data as of 6/30/2014



**Publications Policy:**





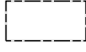

This publication represents interpretations of best available data made by professional geographers. As in all research work, professional interpretations may vary, and can change with advancements in both technology and data quality. This publication is offered as a service of the State of West Virginia; proper use of the information herein is the sole responsibility of the user.

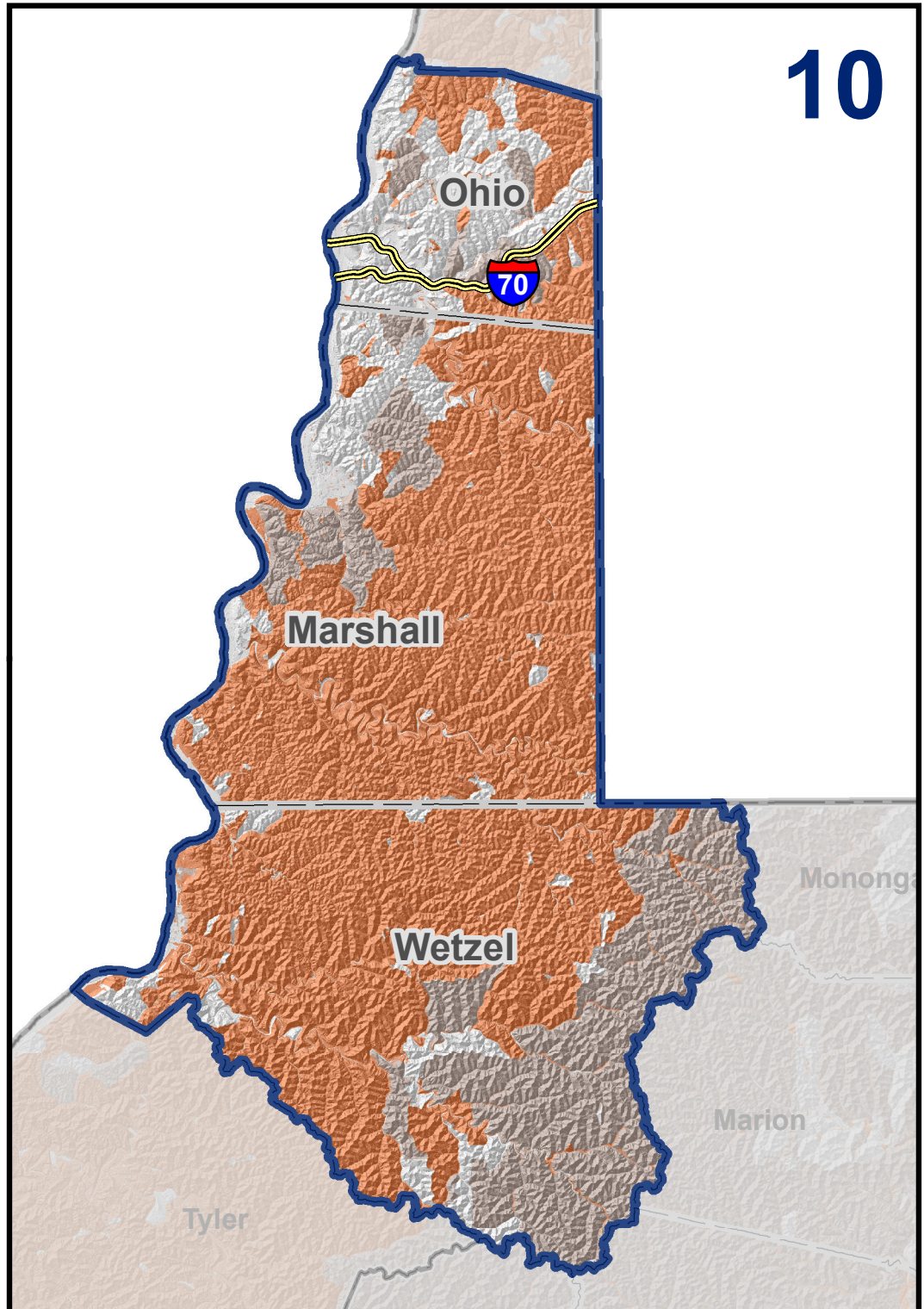
Permission to reproduce this publication is granted if acknowledgement is given to the West Virginia Geological and Economic Survey and the West Virginia Broadband Mapping Program.

This map shows areas that are reported as unserved by fixed broadband with advertised speeds of 3 Mbps downstream and 768 kbps upstream.

Map Date: January 29, 2016  
 Projection: Transverse Mercator  
 Horizontal Datum: NAD 83  
 Coordinate System: UTMz17n  
 Map scale for full 8.5" x 11" display: 1:450,000

### Legend

-  Fixed BB Partially Unavailable
-  Fixed BB Unavailable
-  Commerce Planning & Development Regions
-  State Boundary
-  Counties
-  Interstate Highways



[www.wvbroadbandmap.org](http://www.wvbroadbandmap.org)



West Virginia Geological and Economic Survey  
 Mont Chateau Research Center  
 1 Mont Chateau Road  
 Morgantown, WV 26508-8079  
 Phone: (304) 594-2331  
[www.wvgs.wvnet.edu](http://www.wvgs.wvnet.edu)

